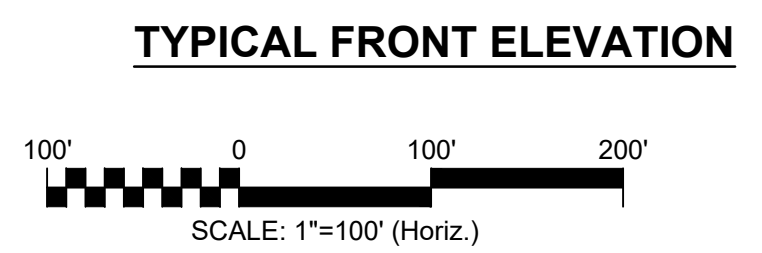


**SITE DATA**

RESIDENTIAL SITE AREA:	±16.85 ACRES
RETAIL SITE AREA:	±1.00 ACRES
PARCELS:	151975, 199309, 199482, 202902
CURRENT ZONING:	PD PUD
STREAM WATERSHED:	LONG CREEK
PROP. SINGLE FAMILY LOTS:	13
PROP. TOWNHOUSE UNITS:	96



REV. NO.	DESCRIPTIONS	DATE

**MCKIM & CREED**  
 8020 Tower Point Drive  
 Charlotte, North Carolina 28227  
 Phone: (704) 841-2588, Fax: (704) 841-2567  
 NC License# F-1222  
 www.mckimcreed.com

**DSG**  
 Development Solutions Group  
**BELLEWOOD SUBDIVISION**

**BELLEWOOD SUBDIVISION**  
 2880 BESSEMER CITY ROAD  
 BESSEMER CITY, NC  
**SKETCH PLAN**

DATE: JANUARY 2020	SCALE	1 DRAWING NUMBER
MCE PROJ. # 07780-0004	HORIZONTAL: 1"=100'	
DRAWN BDT	VERTICAL: N/A	
DESIGNED BDT		
CHECKED KJC		
PROJ. MGR. KJC		REVISION

STATUS: **PRELIMINARY DRAWING NOT FOR CONSTRUCTION**